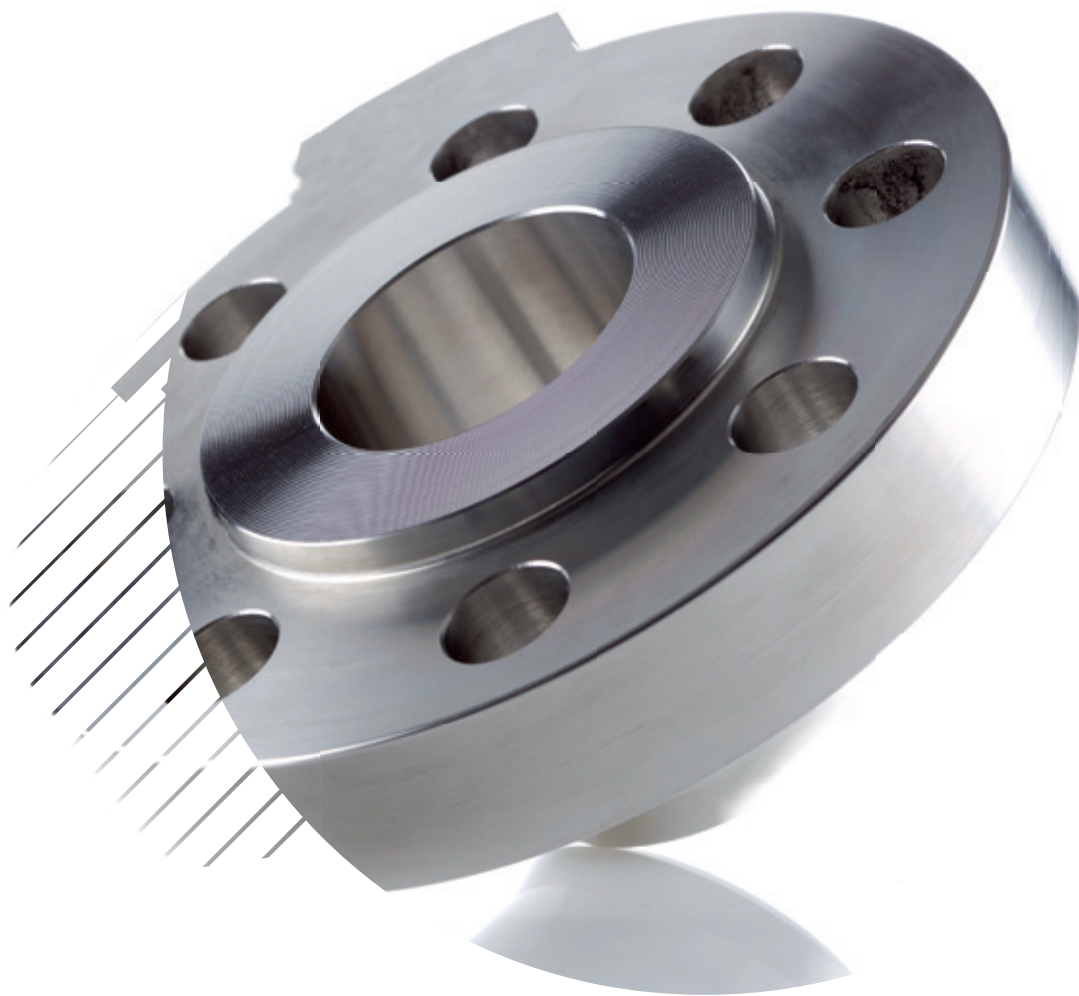
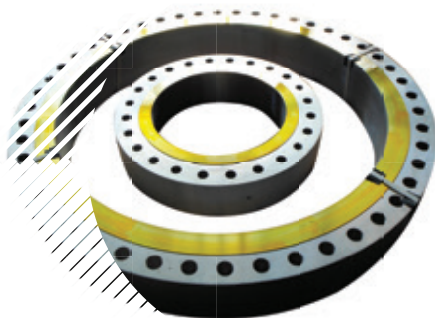


production news



Made in Italy

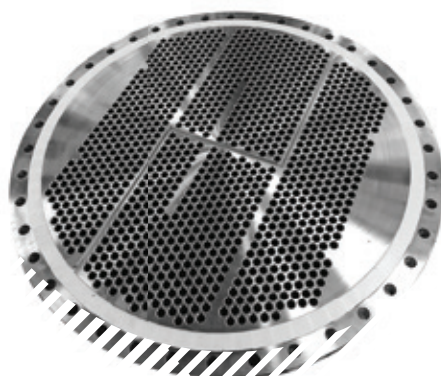
14
special products



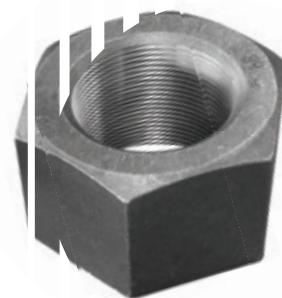
30
gaskets



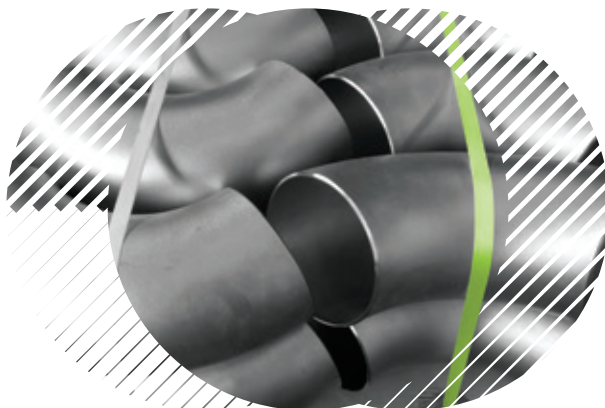
22
flanges for heat
exchangers



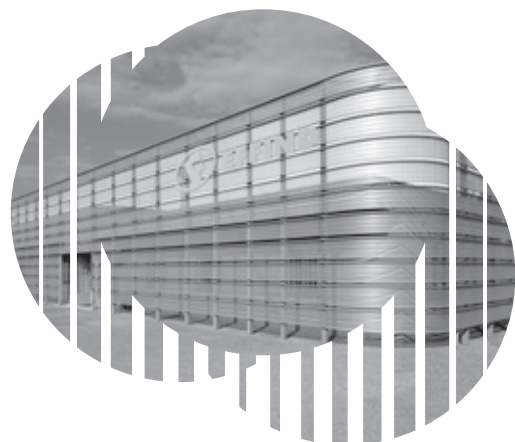
32
stud bolts
& hex nuts



26
pipes & fittings



04
company



06
flanges



the company

When 50 years of history
are combined with 25 years'
experience.

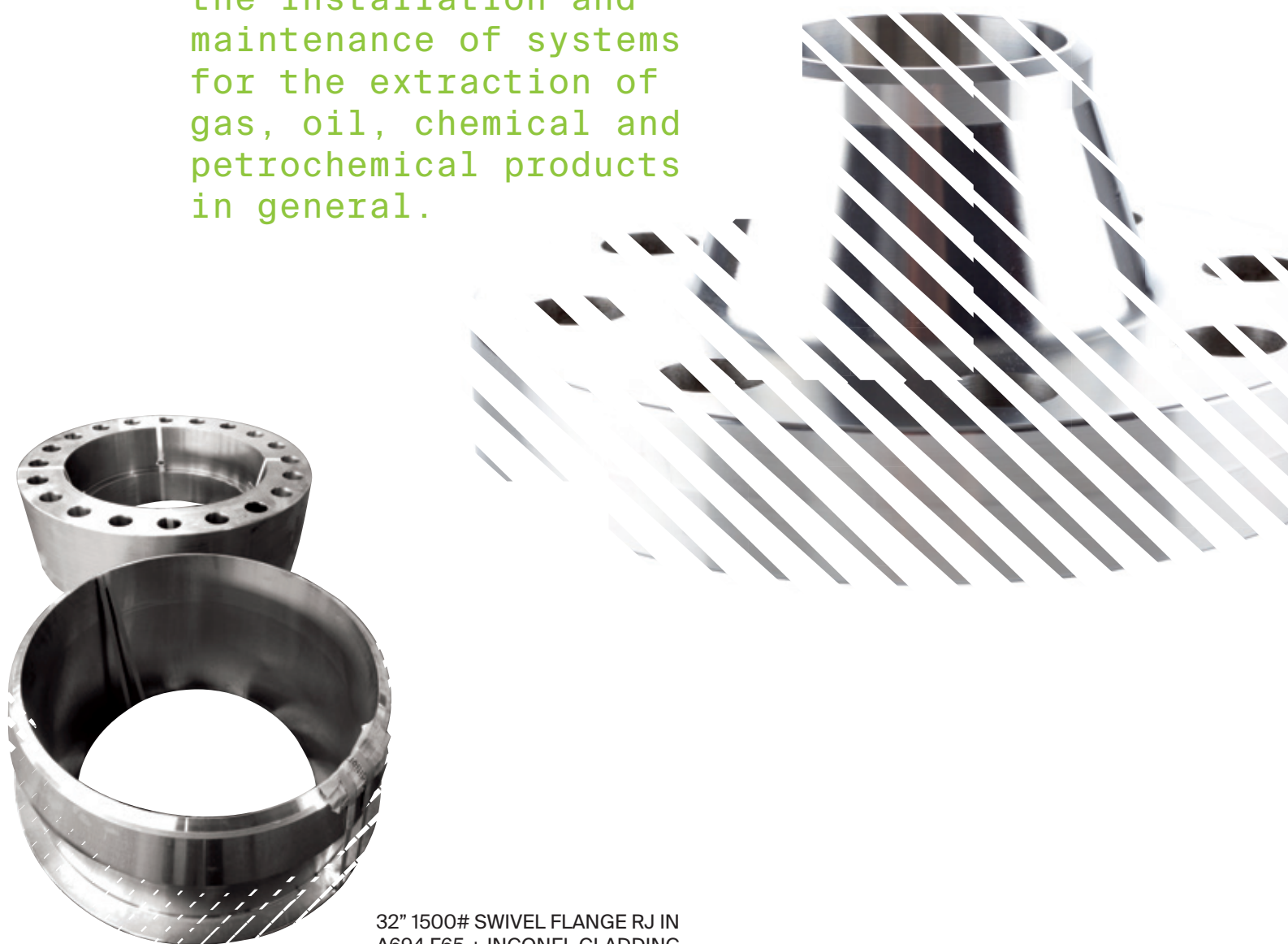
Effind has been on European and worldwide market for many years serving oil & gas (onshore and offshore), chemical and petrochemical, naval and power-energy industries. Effind manufactures and trades flanges according to the main international norms, connections for piping, tube-sheets as well as special items according to drawing in all sizes and ratings, in the following grades: carbon steel, stainless steel, alloy steel, duplex and super duplex, nickel alloys. Effind can also manufacture particulars used in the heat exchangers and pressure vessels and also deals with the most common full package items (elbows, tees, fittings, gaskets, stud-bolts, tube-sheets, closure for valves, headers for heat exchangers). Effind is expert in the supply of components to main refineries all over the world.

Within this new organization, Effind brings together a team of experts with over twenty years' experience in the supply of components for the oil & gas sectors (onshore and offshore), petrochemical and chemical plants, mechanical and power-energy industries. This team can boast considerable know-how in the sector, and can offer its clients the best consultancy on supplies and the most efficient commercial services, both pre-and post-sales.

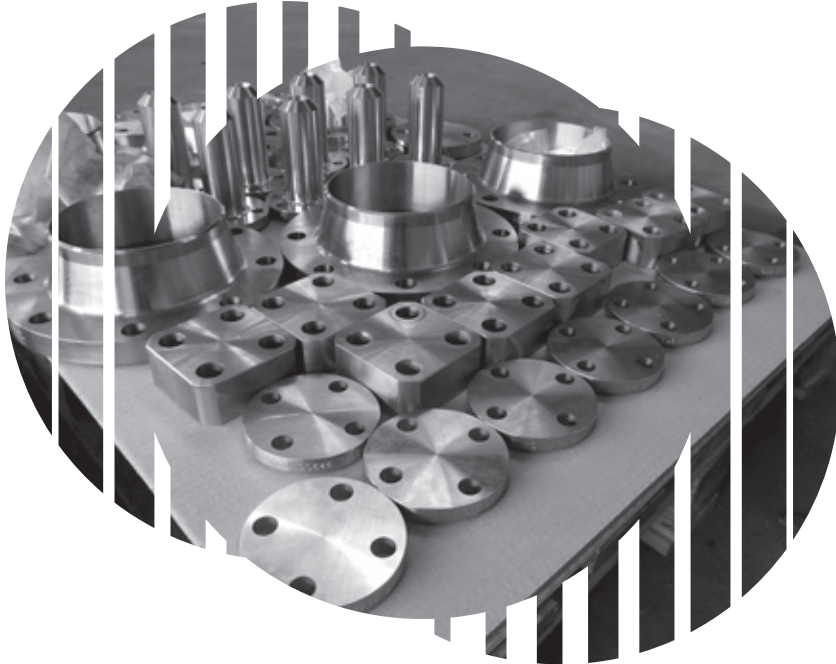


flanges

Our production of standard flanges, custom made flanges and forged pieces used to assembly components, in any size and material, can meet all requirements for the installation and maintenance of systems for the extraction of gas, oil, chemical and petrochemical products in general.

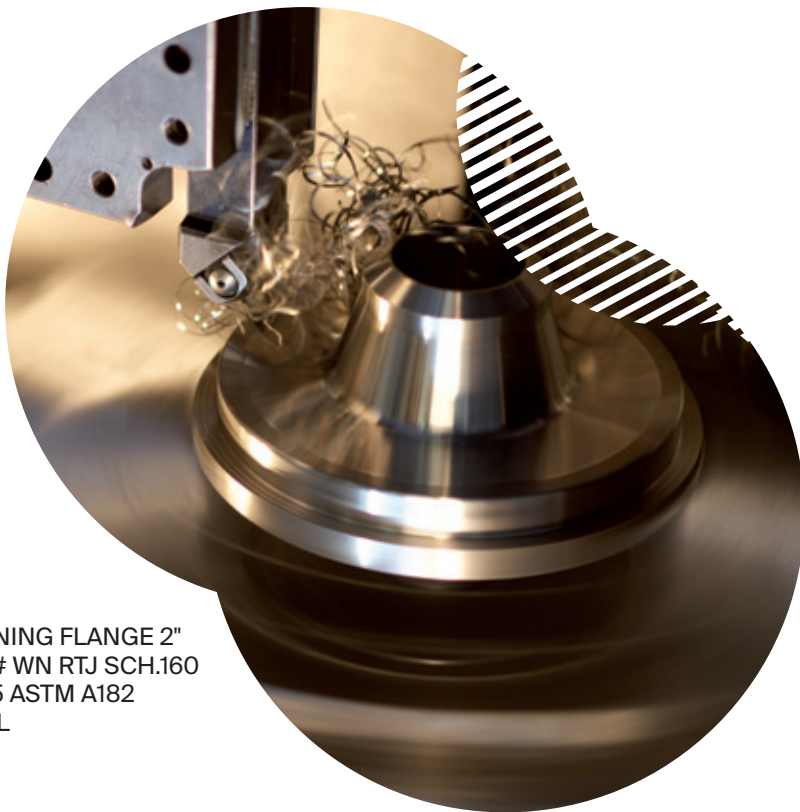
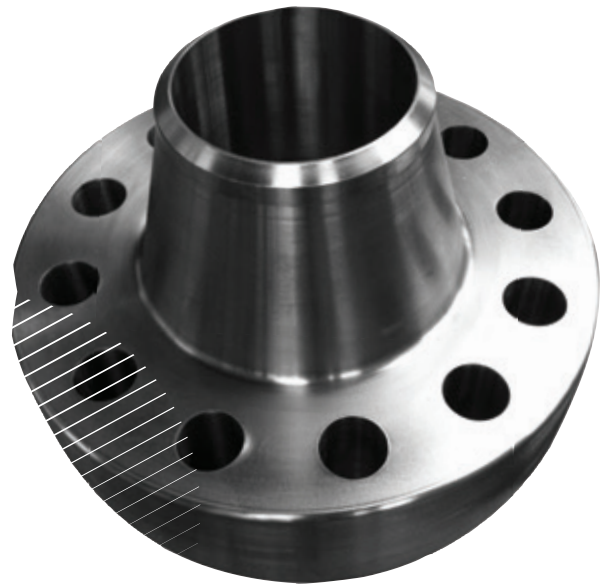


32" 1500# SWIVEL FLANGE RJ IN
A694 F65 + INCONEL CLADDING



COMPLETE PIPING BULK MATERIAL

ASME B16.5 8" 1500#
WN RTJ WTHK.18MM IN
INCONEL 625



TURNING FLANGE 2"
300# WN RTJ SCH.160
B16.5 ASTM A182
F316L

THREAD GAUGE
CHECK

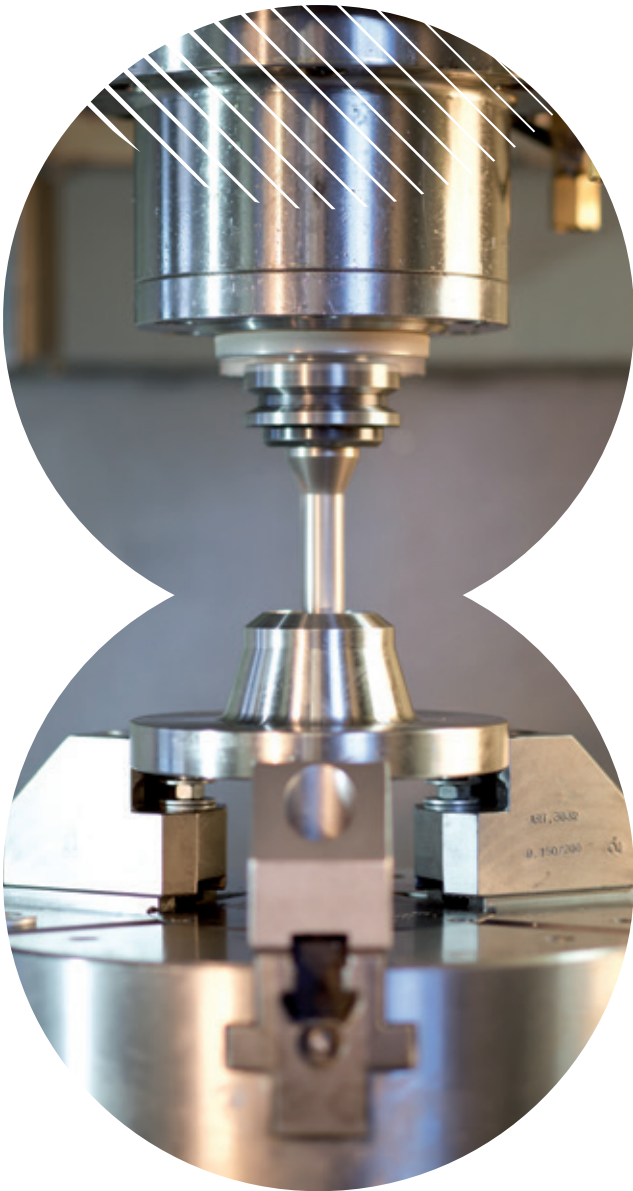




RAW FLANGES

08

ORIFICE PAIR WN RF FLANGE 2"
300/600# B16.36 - SCH.XS - ALLOY
825 (INCOLOY)



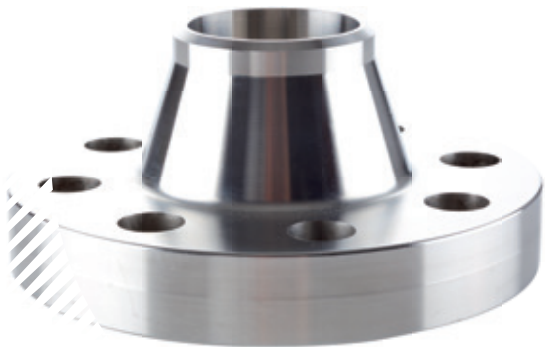
DRILLING
FLANGE 2" 150#
WN RF SCH.160
B16.5 - ASTM A182
F51



LOW STRESS MARKING



B16.5 1/2" 1500#
WN RF SCH. 10 IN
A182 F316/F316L



2" 600# WN RF
SCH. STD IN ALLOY
625 (INCONEL)

09



MILLING 1 1/2 3000# SPECIAL
LATERAL FITTING B16.11 - AISI 316 TI

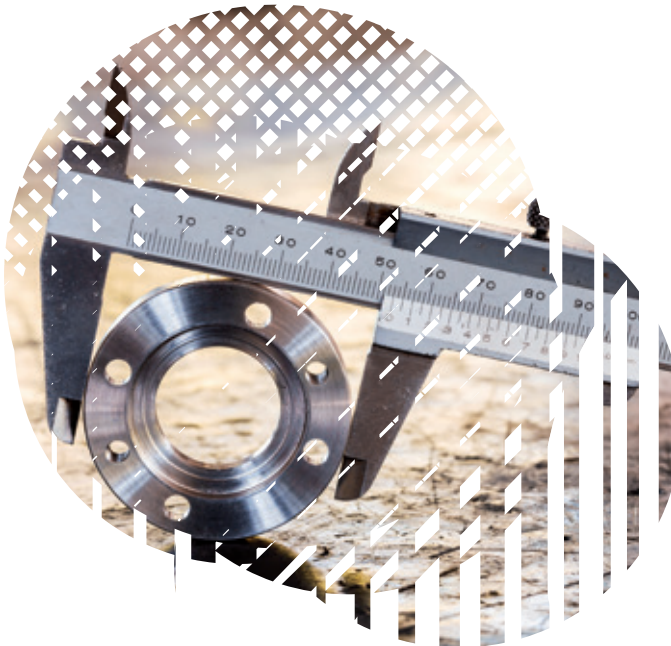


10



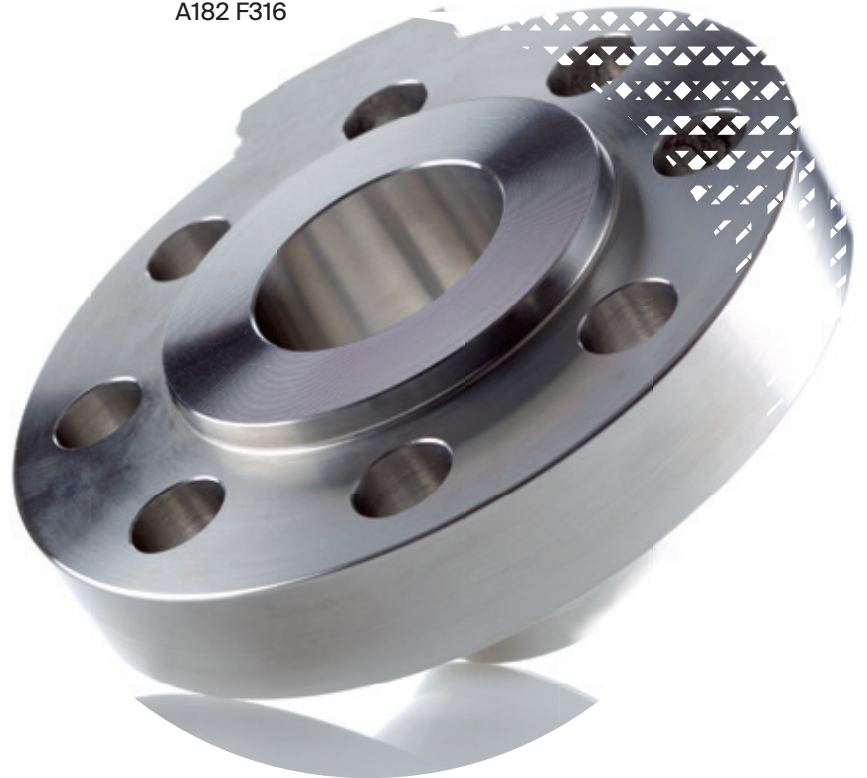
EEMUA 145-3 16" 20BAR UNS
7060X

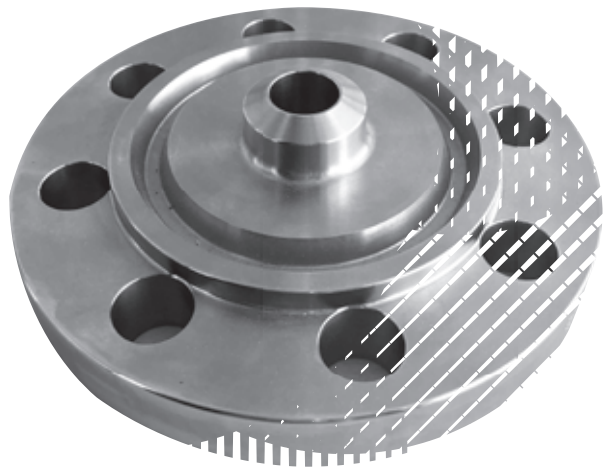
FILTER PLATE IN
AISI 304



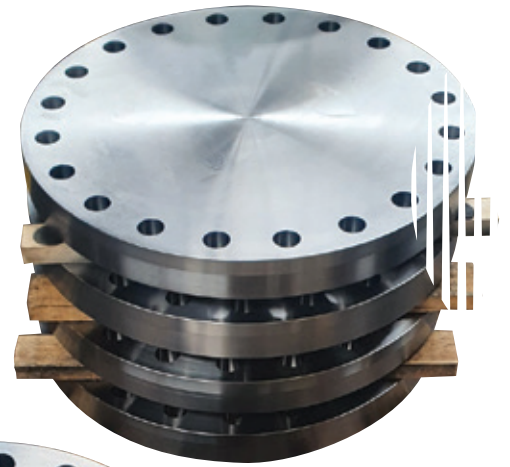
DIMENSIONAL CHECK /
INSPECTION

B16.5 3" 600# WN
RF SCH. 40 IN
A182 F316





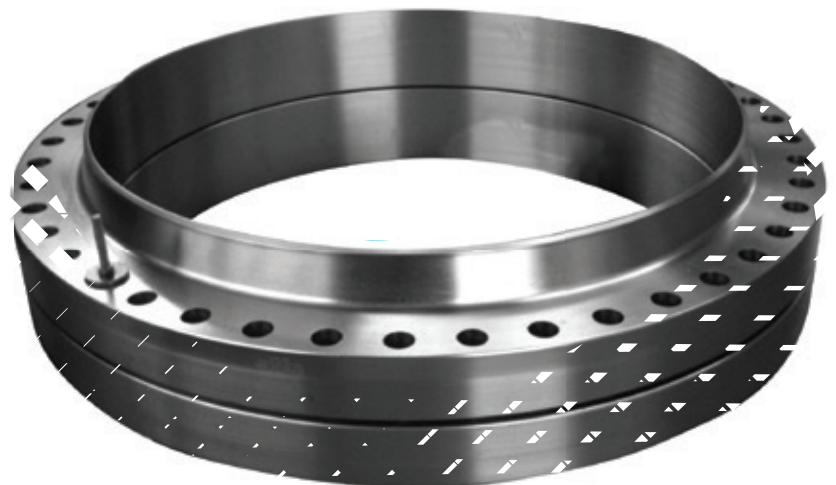
SPECIAL BL RJ
ACC. TO DWG. IN
F321H



18" 600# WN RJ IN A694 F65 WITH 3MM
INTERNAL CLADDING IN INCONEL 625



18" 600# WN RF



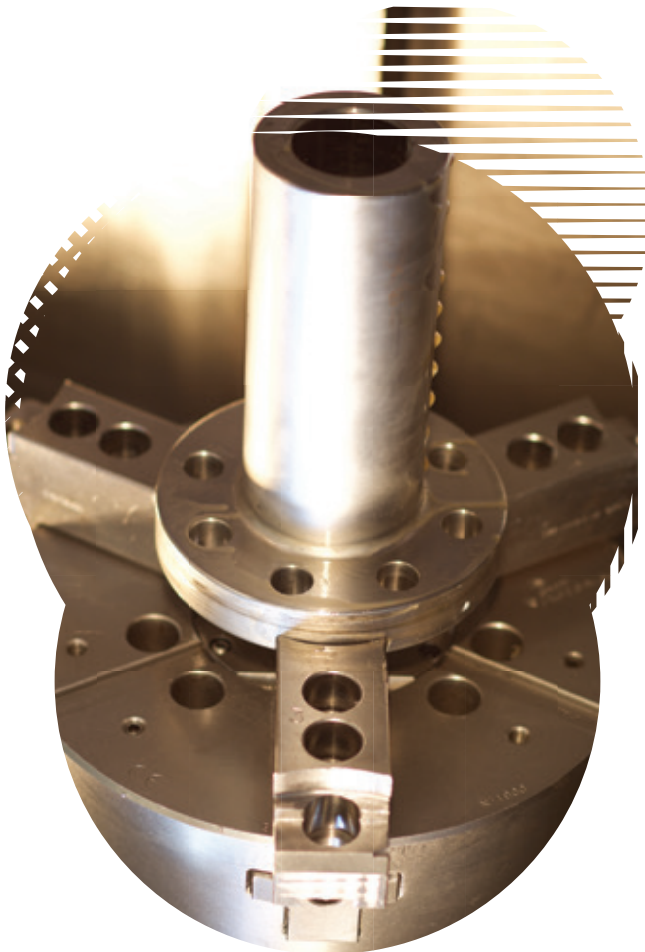
ASME B16.47/A
52" 150# WN RF
IN A350 LF2



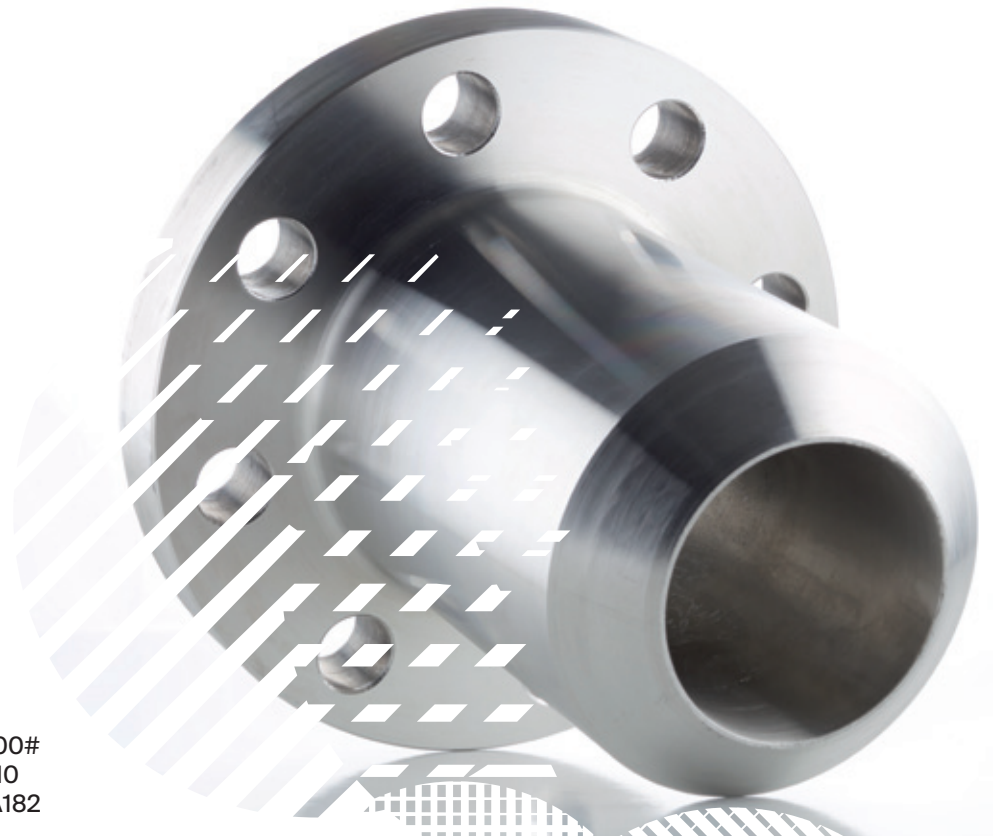
EEMUA 145-3 2" 20BAR UNS7060X



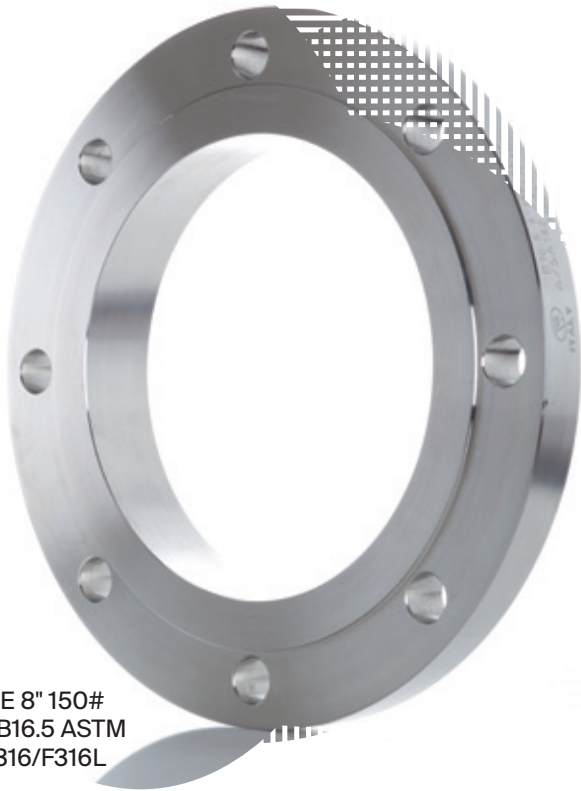
12



ASME B16.5 2"
600# LONG
WELDING NECK
RF MACHINING



FLANGE 3" 300#
LWN RF L= 210
B16.5 ASTM A182
F304/F304L



FLANGE 8" 150#
SO RF B16.5 ASTM
A182 F316/F316L

STAINLESS
STEEL FLANGES
READY FOR
SHIPMENT



ASME B16.48 2"
150# SPECTACLE
BLIND IN A516
GR.60

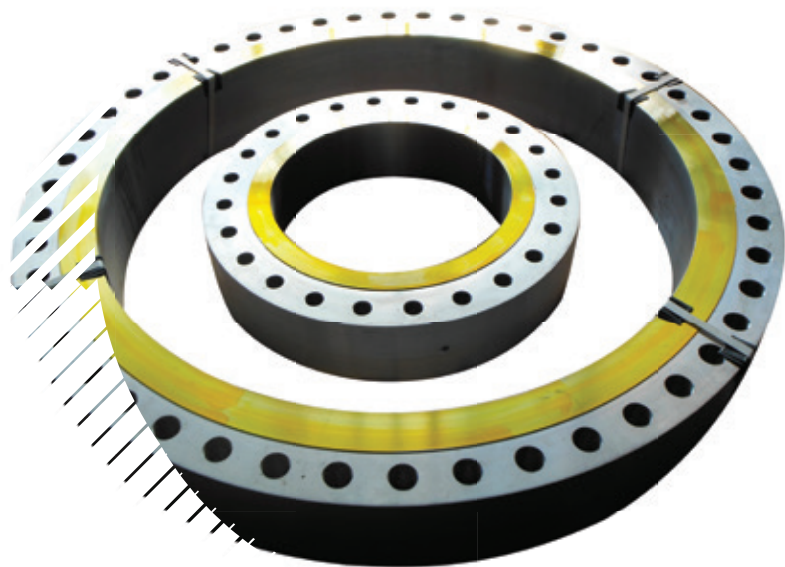
EEMUA 145-3
2" 20BAR UNS
7060X



special products

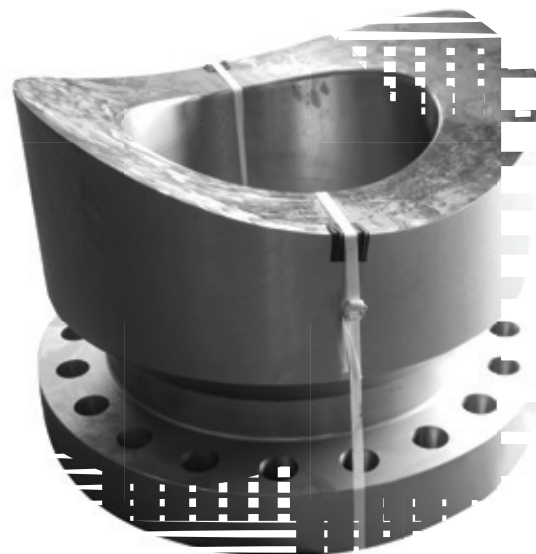
Effind can boast vast experience and in-depth knowledge of the production of custom made pieces according to drawing in all types of materials, particularly in nickel alloys, to meet the broadest range of requests from its clients.



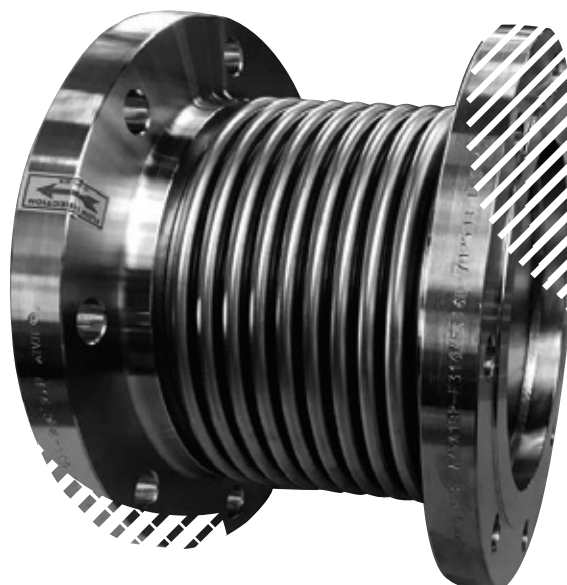


ADAPTER
FLANGE 36" AND
14" A105N

24" 900# SELF
REINFORCED
NOZZLE RF IN LF2



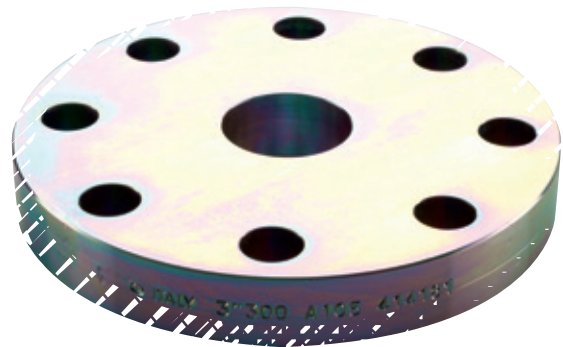
2" 600#
NIPOFLANGE RF
IN A182 F51



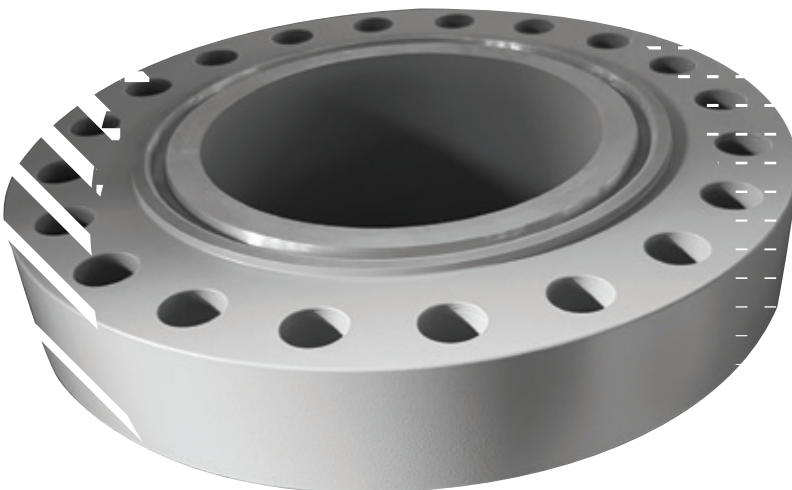
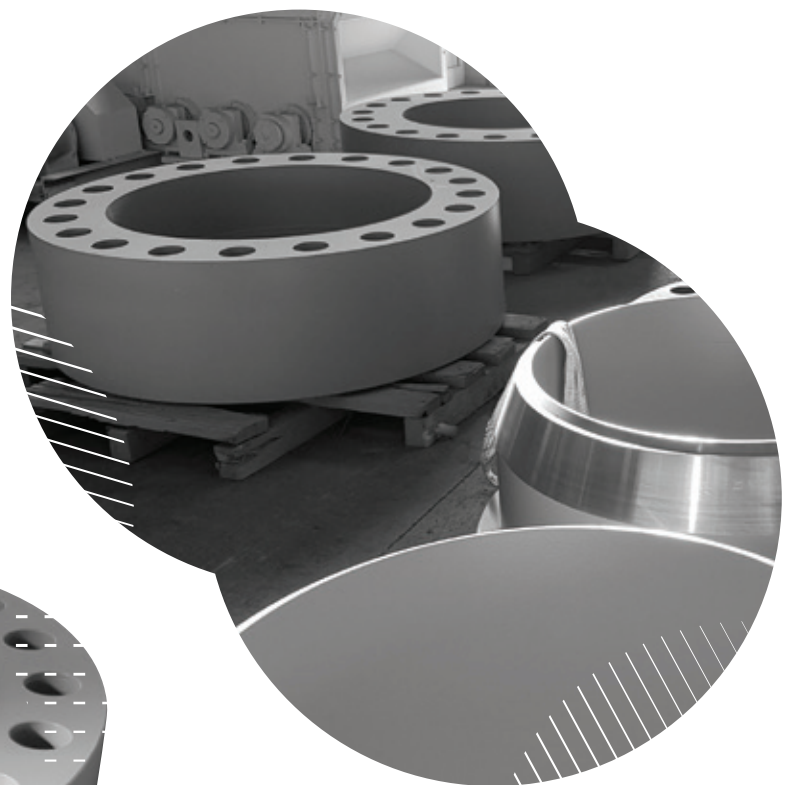
EXPANSION
JOINT RF 6" 150#
IN F316



3" SPECIAL
NOZZLE A182
F316L

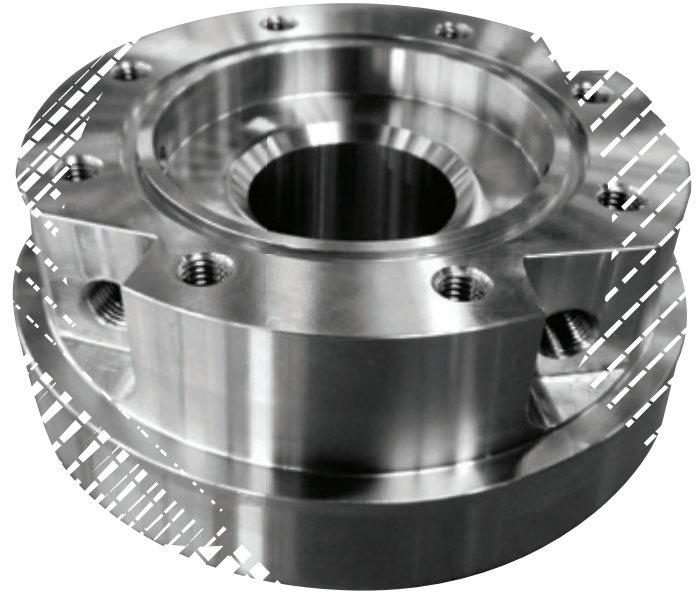
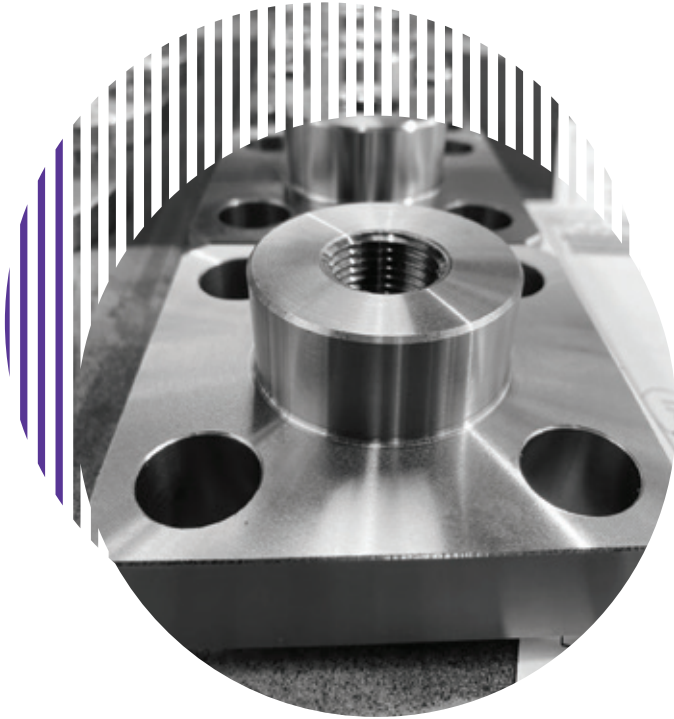


SPECIAL FLANGE 3" 300# IN A105
ELECTROGALVANIZED



32" 1500# WN RJ
WITH CLADDING
+ PAINTING
SPECIAL FOR
OFF-SHORE

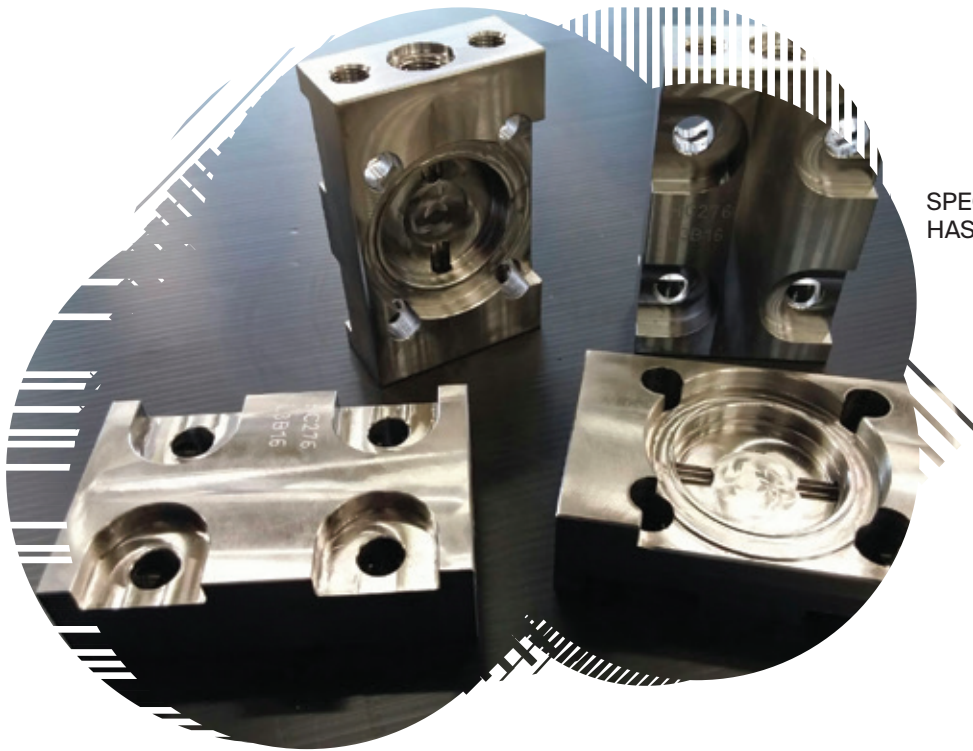
SPECIAL L. WN
ACC.TO DWG
½" RJ IN LF² +
GALVANIZATION



SPECIAL PART IN
A182 F316

VALVE BODY
INTAKE ACC.TO
DWG.

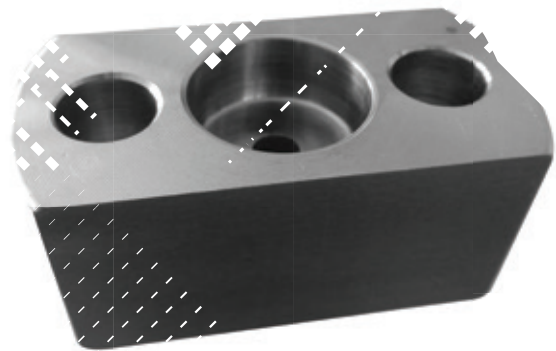




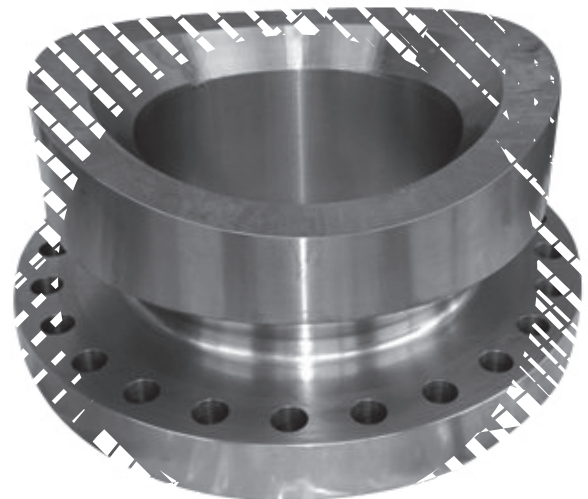
SPECIAL PARTS IN
HASTELLOY C276



SPECIAL KIDNEY
FLG. IN A182 F316



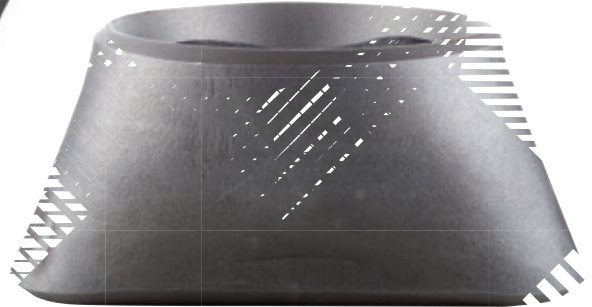
BL. ACC.TO DWG.
DIM. 180X26 MM
IN F321



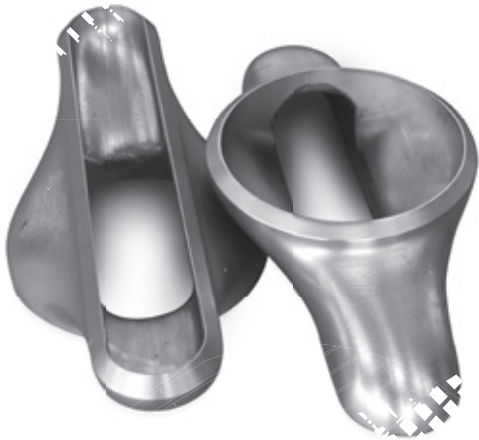
REINFORCED
NOZZLE 20"
600# IN A694
F65



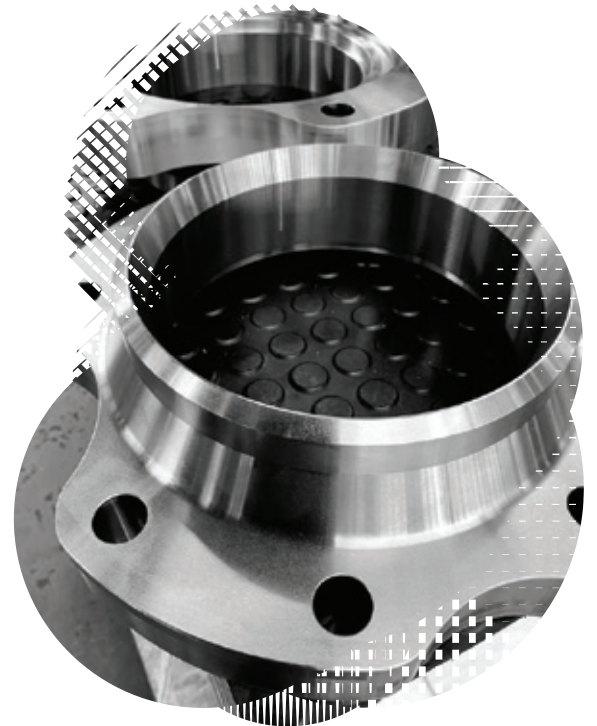
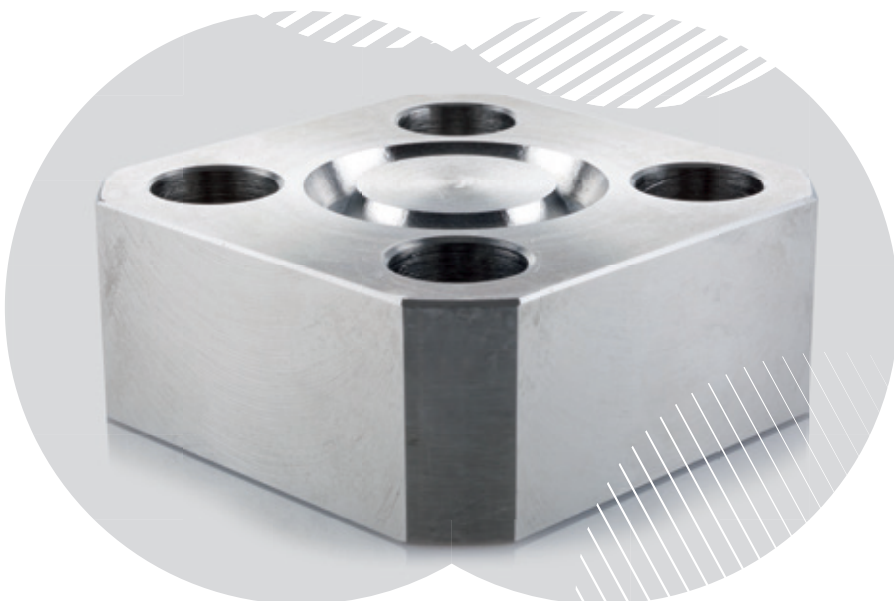
SWAGE NOZZLE
8" Sch. XS ACC.TO
DWG. IN SA/A234
WPB (FROM PIPE)



SPECIAL
TRANSITION
NOZZLE



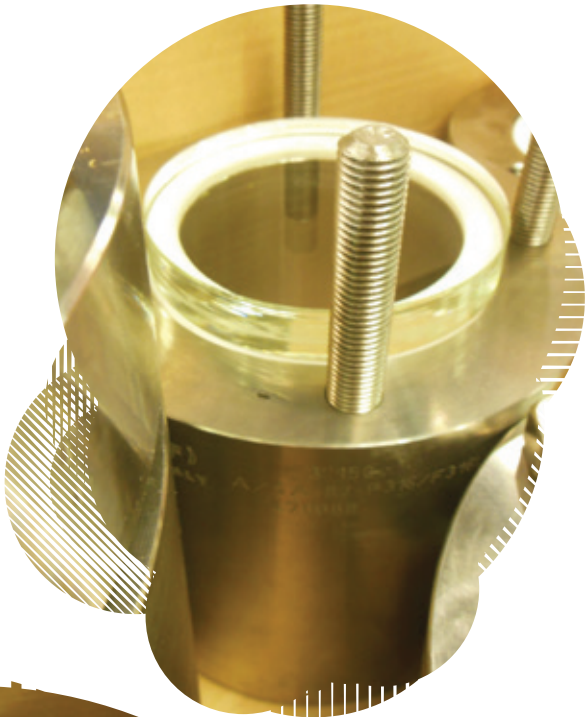
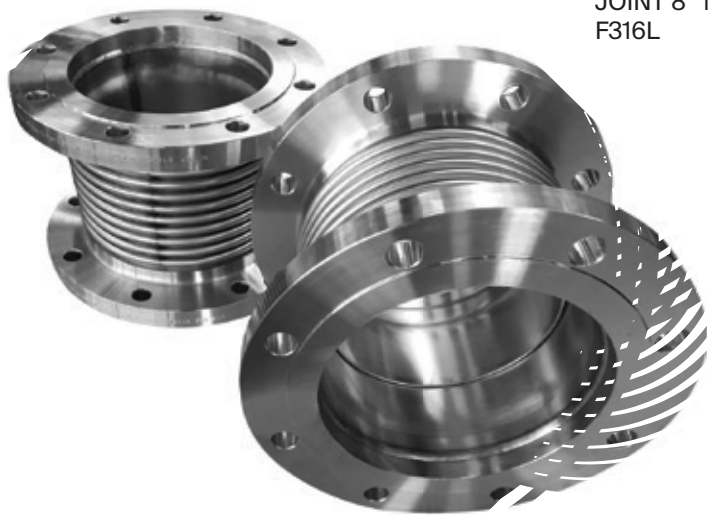
SQUARE SPECIAL
FLANGE 3/4"
2500# BL RTJ IN
A182 F51



WN ACC.TO DWG.
DIM. 340X191
MM H=91 MM IN
SA105N



EXPANSION
JOINT 8" 150 IN
F316L



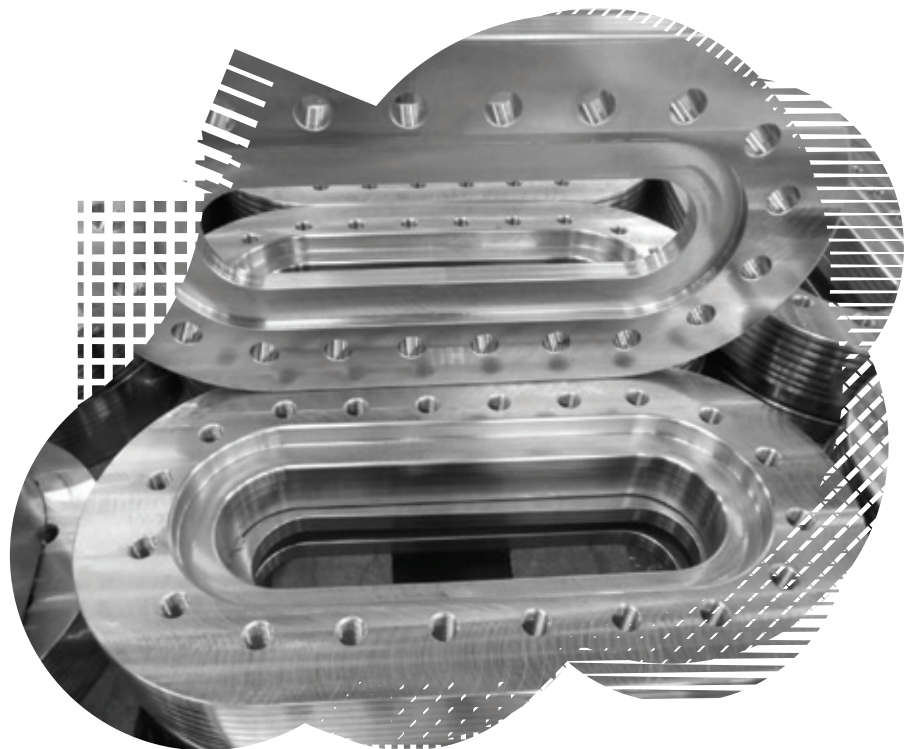
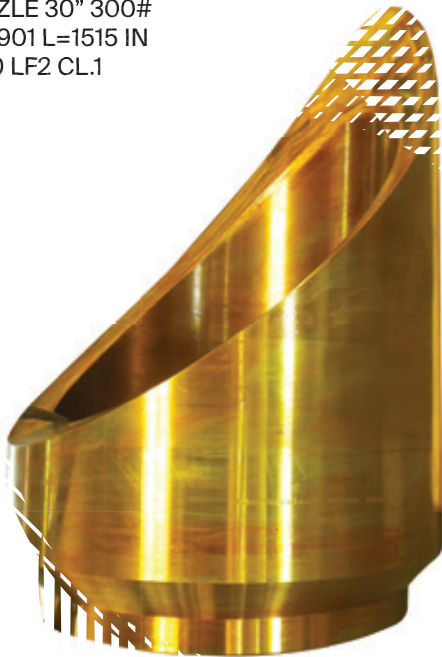
6" AND 8" SIDE
GLASSES IN
STAINLESS STEEL



1" SPECIAL PARTS
IN HC276



NOZZLE 30" 300#
OD=901 L=1515 IN
A350 LF2 CL.1



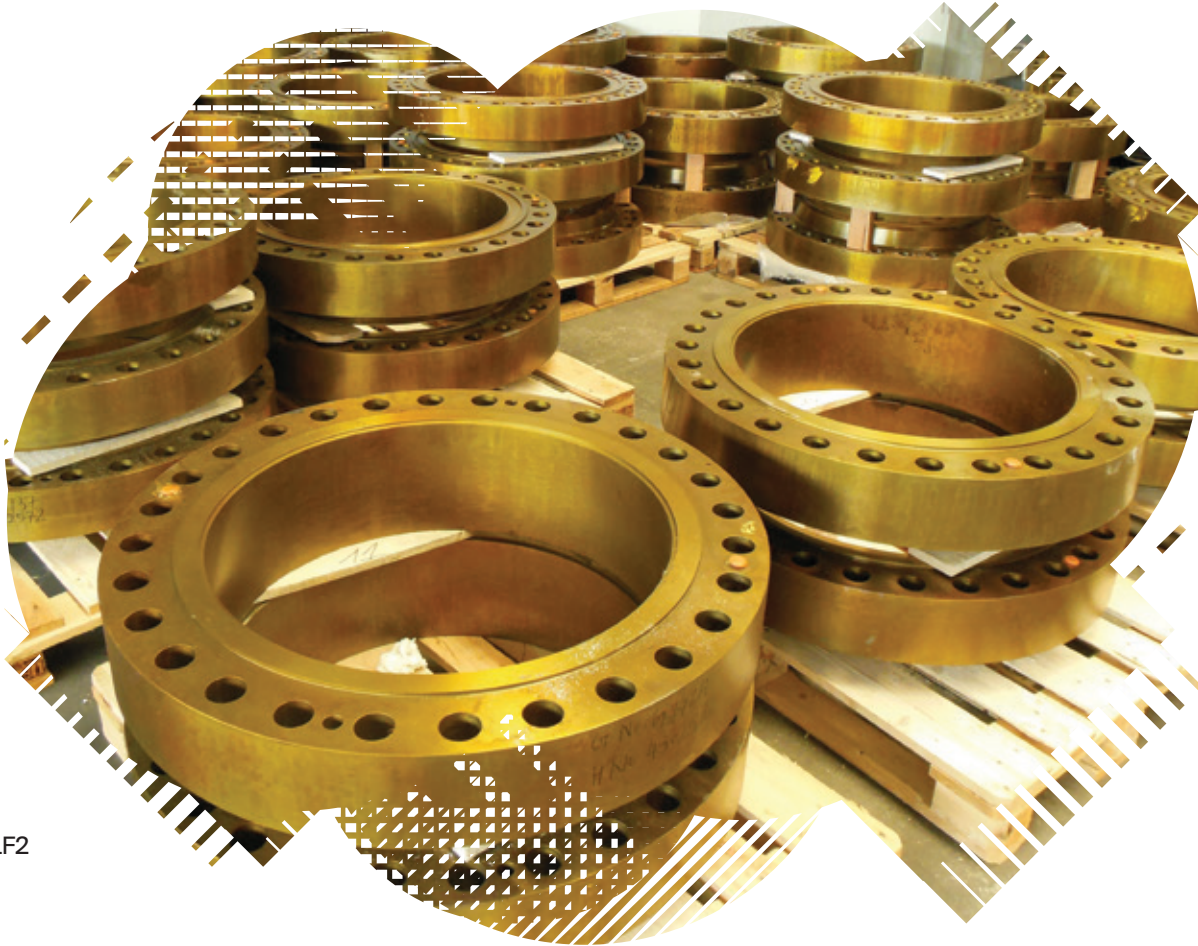
OVAL SIGHT
GLASSES IN
CARBON STEEL



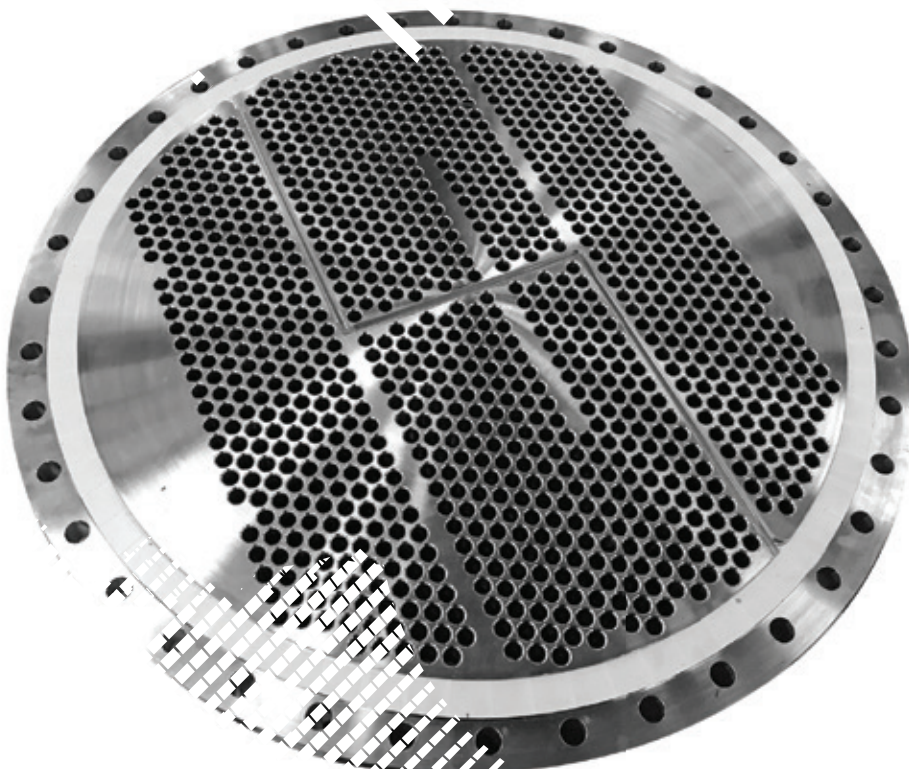
flanges for heat exchangers

We manufacture connections such as flanges, tube-sheets, special fittings and components for heat exchangers. We realize projects and plants situated all over the world, cooperating with the main engineering international companies.



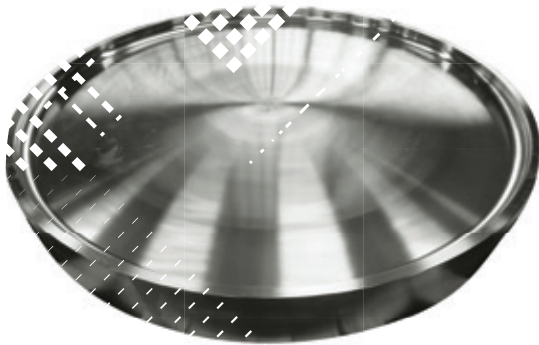
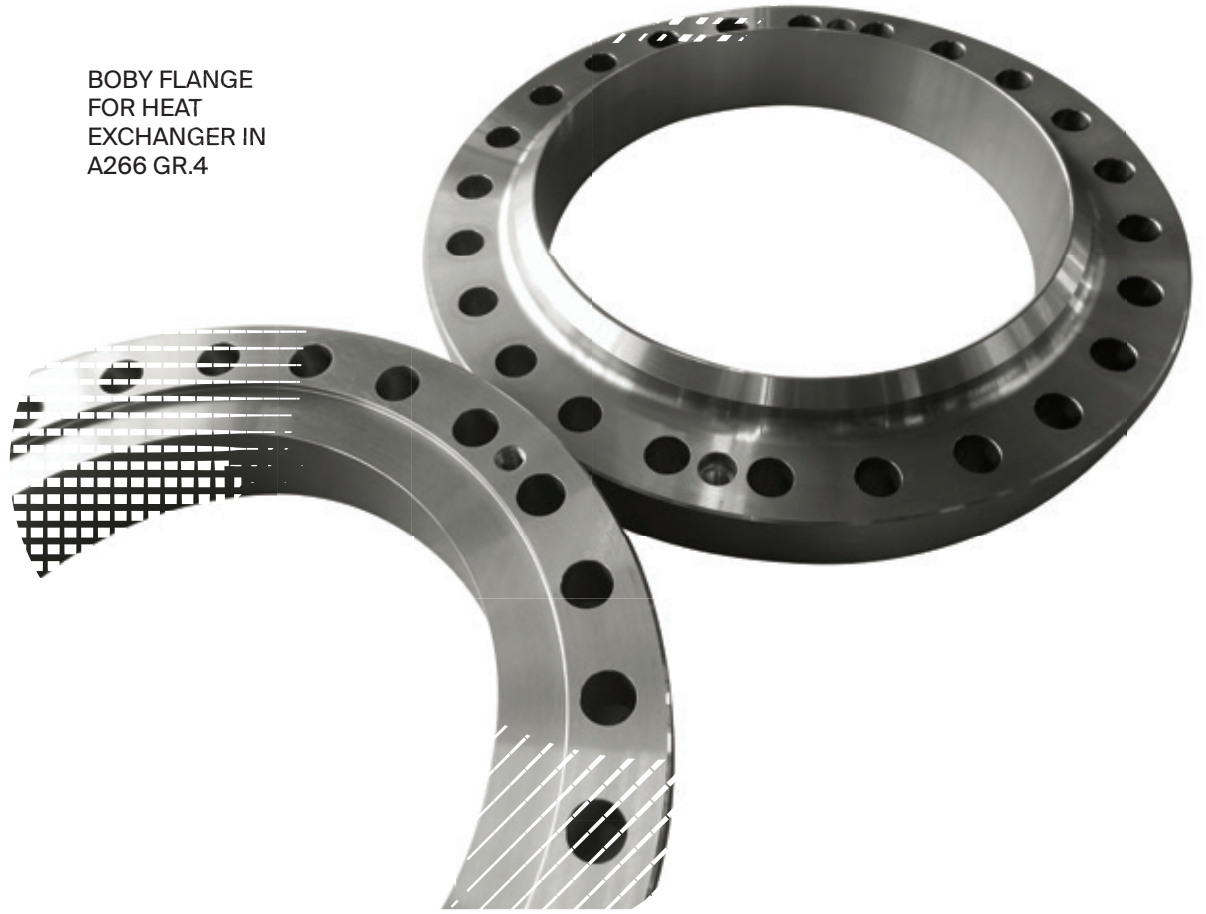


ASME B16.47/A
28" 600# WN
SPECIAL JOINT
LT/LG IN A350 LF2
CL.1

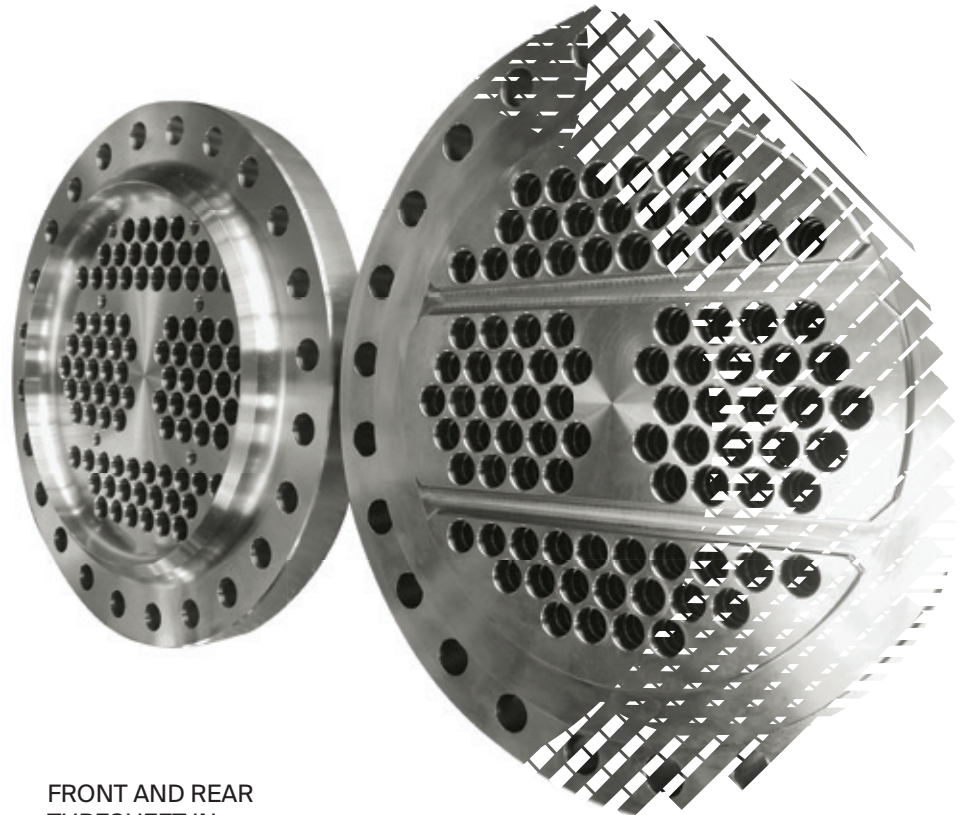


TUBE SHEET IN P355NH

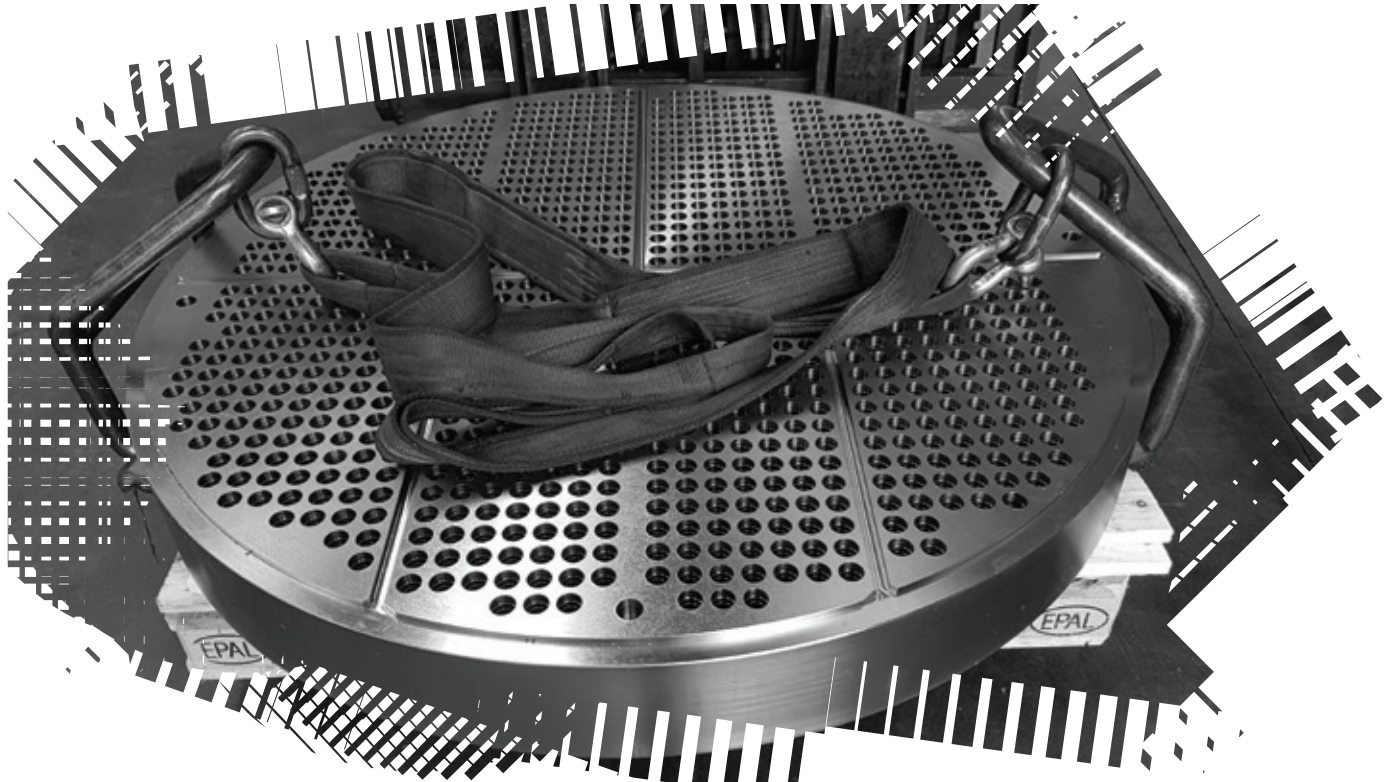
BOBY FLANGE
FOR HEAT
EXCHANGER IN
A266 GR.4



PRE-MACHINIG FOR TUBESHEET
DIAM.2270 MM THK.250MM IN A182
F321

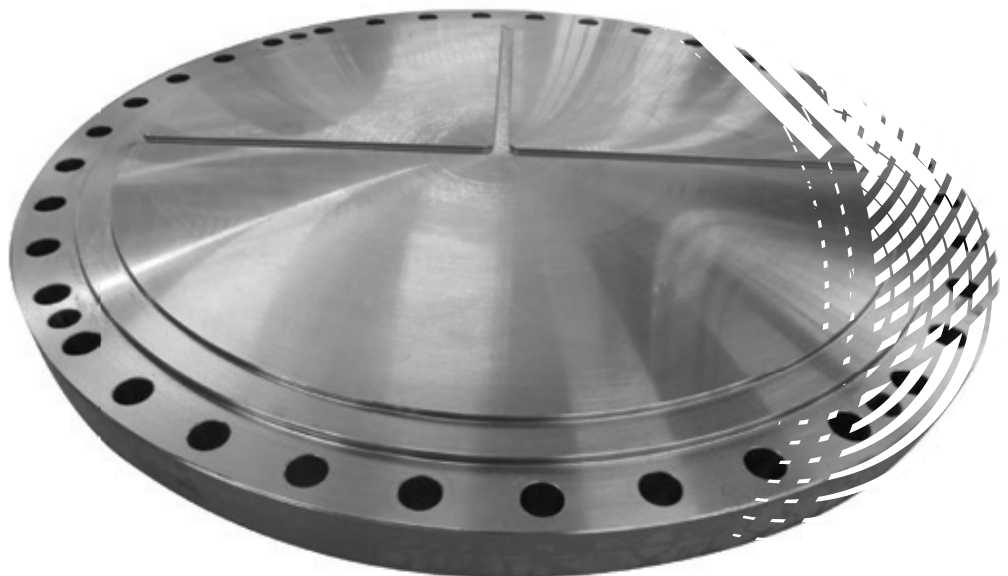


FRONT AND REAR
TUBESHEET IN
A/SA182 F304/L



TUBE SHEET OD=1500 THK=180 IN
A266 GR.2

COVER FOR HEAT
EXCHANGER

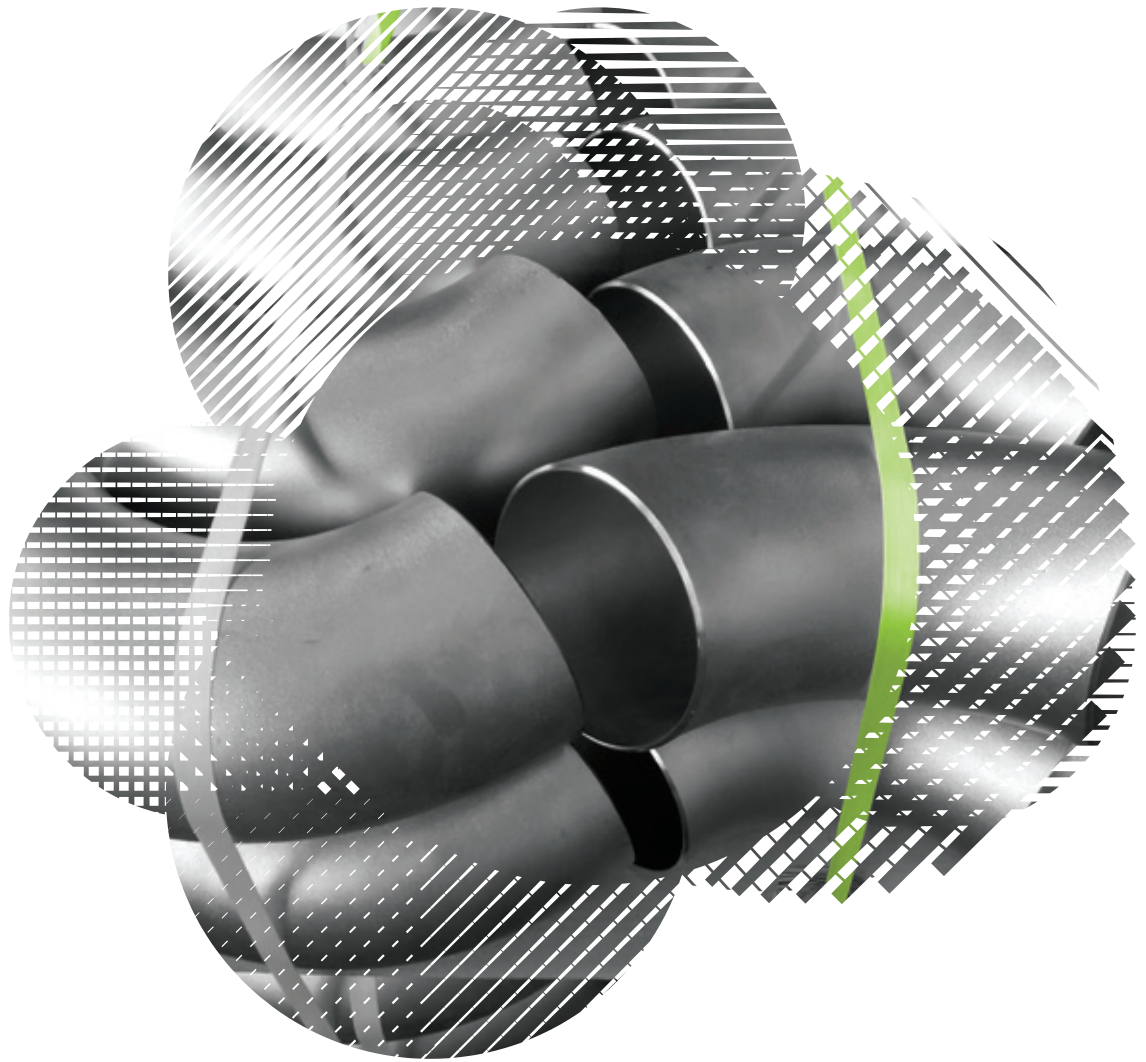


pipes & fittings

We can boast a vast range of pipes in carbon, stainless and alloy steel. Working with the main producers worldwide we are able to supply pipes in any material even in special steels not normally stocked. Effind also specializes in the supply of pipe fittings for plumbing and heating, gas distribution, refrigeration, chemical and industrial systems in order to provide a complete service.

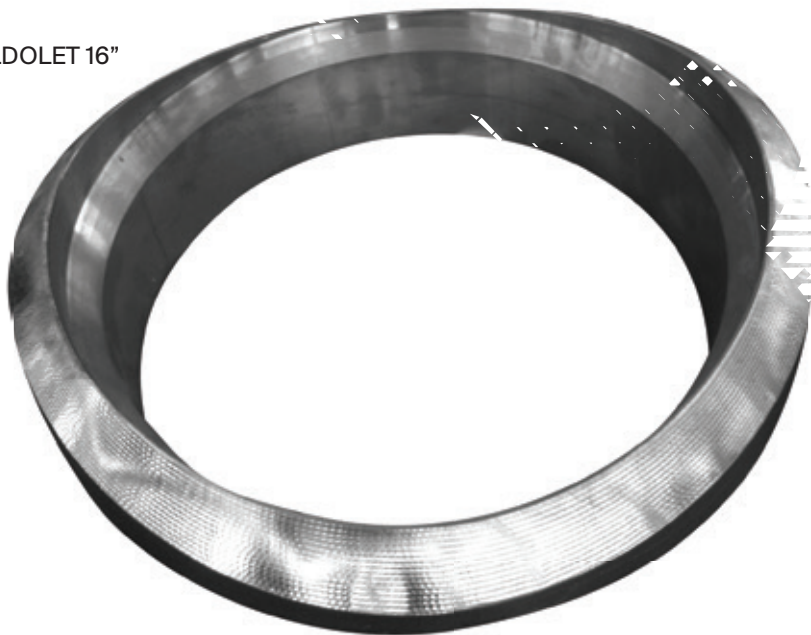


6" ELBOW IN A182
F316L



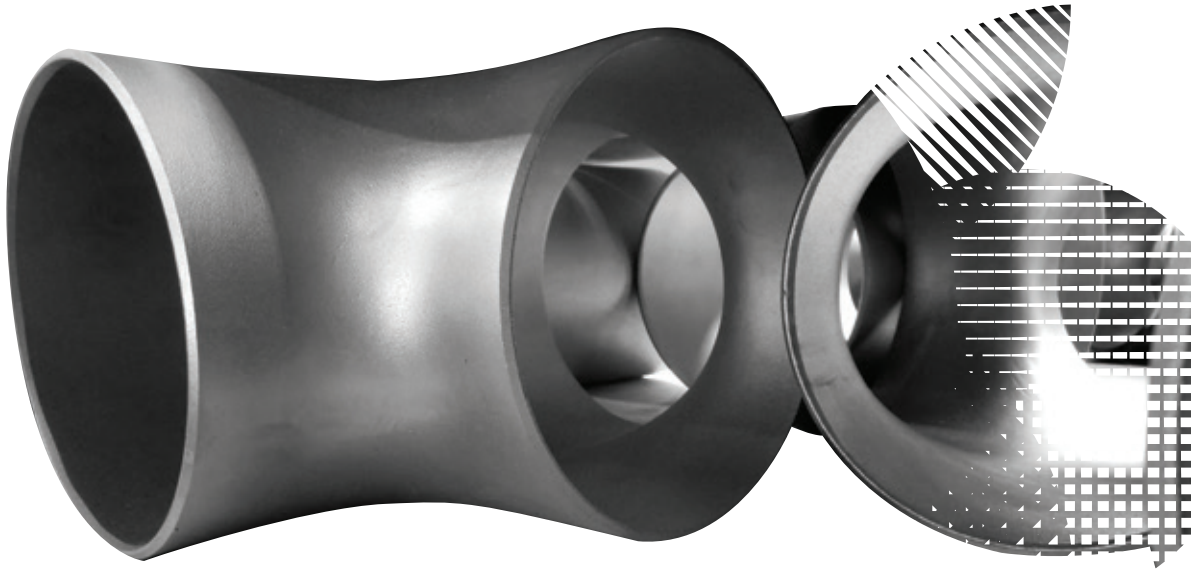
27

WELDOLET 16"

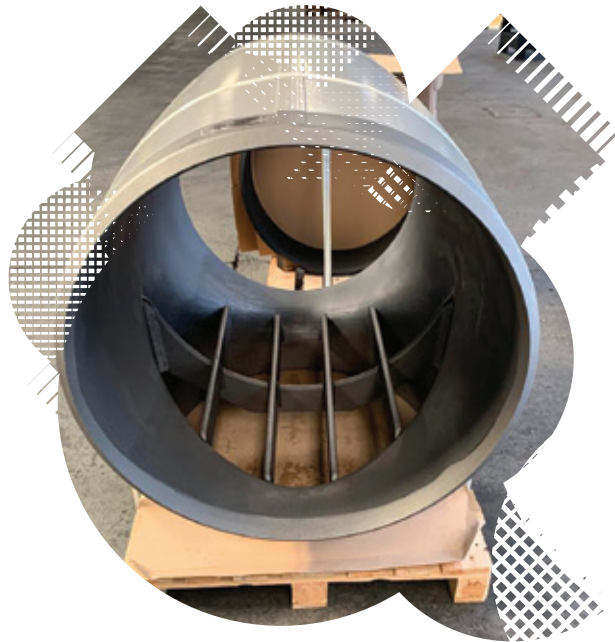


SPECIAL VENTURI
TUBE ACC.TO
DWG. IN A182
F316





B16.9 EQUAL TEE
24" SCH. XS IN
A234-WPB



BARRED TEE
36" X 36"
WT=20,60MM IN
X65 - 1160 KG.

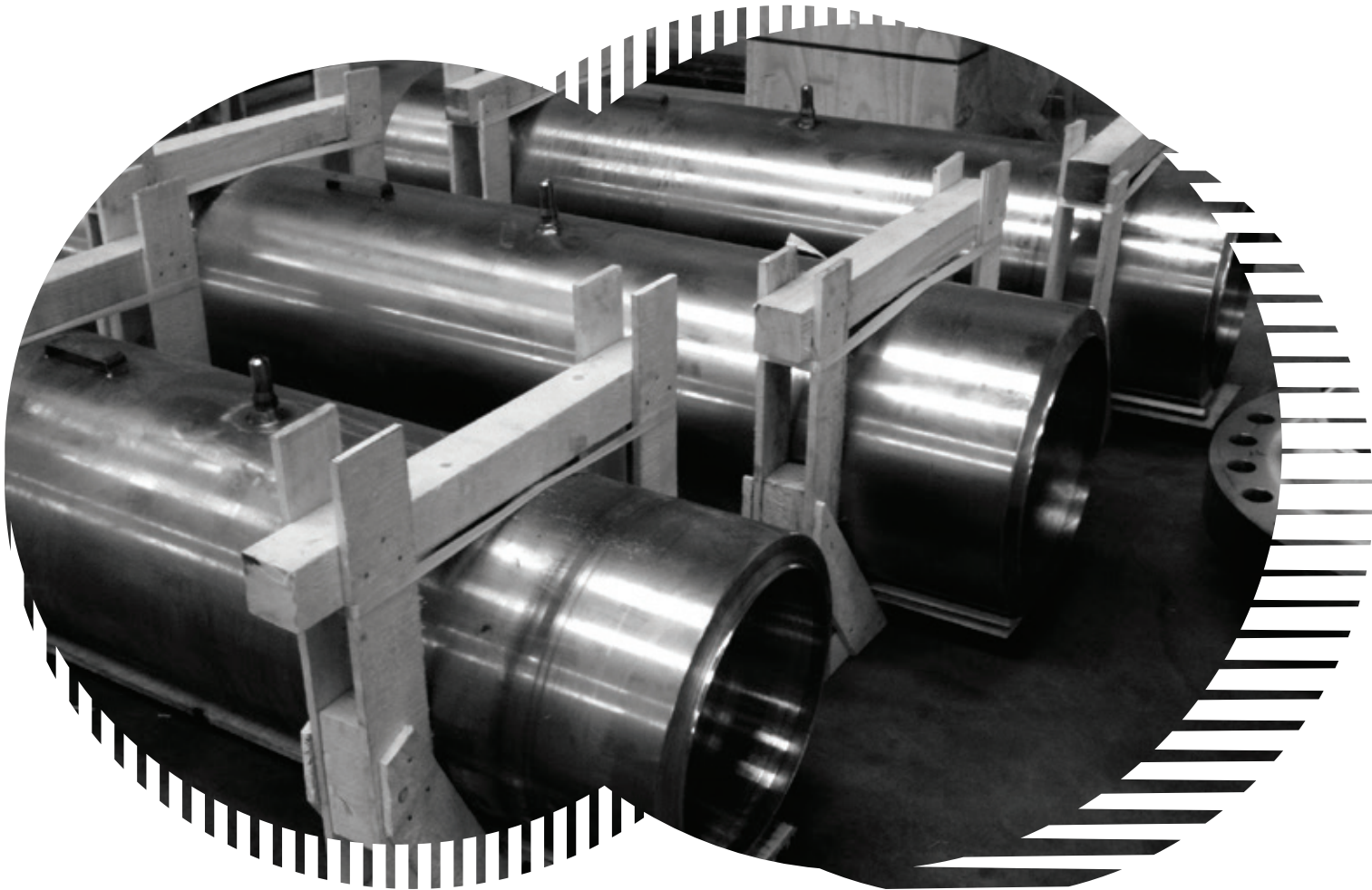


HOT BEND 90°
ELBOW 36" THK.
20,60MM IN X60

8" SWAGE NOZZLE
ACC.TO DWG.



SMLS PIPES - API 5L



VENTURI TUBE
18" IN AISI F347



gaskets

We supply spiral wound gaskets in a big range and dimensions: circulars, ovals, with inner and outer ring according to customer's requests and international standards specifications: ASME B16.20, ANSI B16.21, DIN, BS, etc... with diameters from ½" up to over 60".

SPIRAL WOUND GASKET



SPIRAL WOUND
GASKET



31

SPECIAL GASKET
FOR HEAT
EXCHANGER



stud bolts & hex nuts

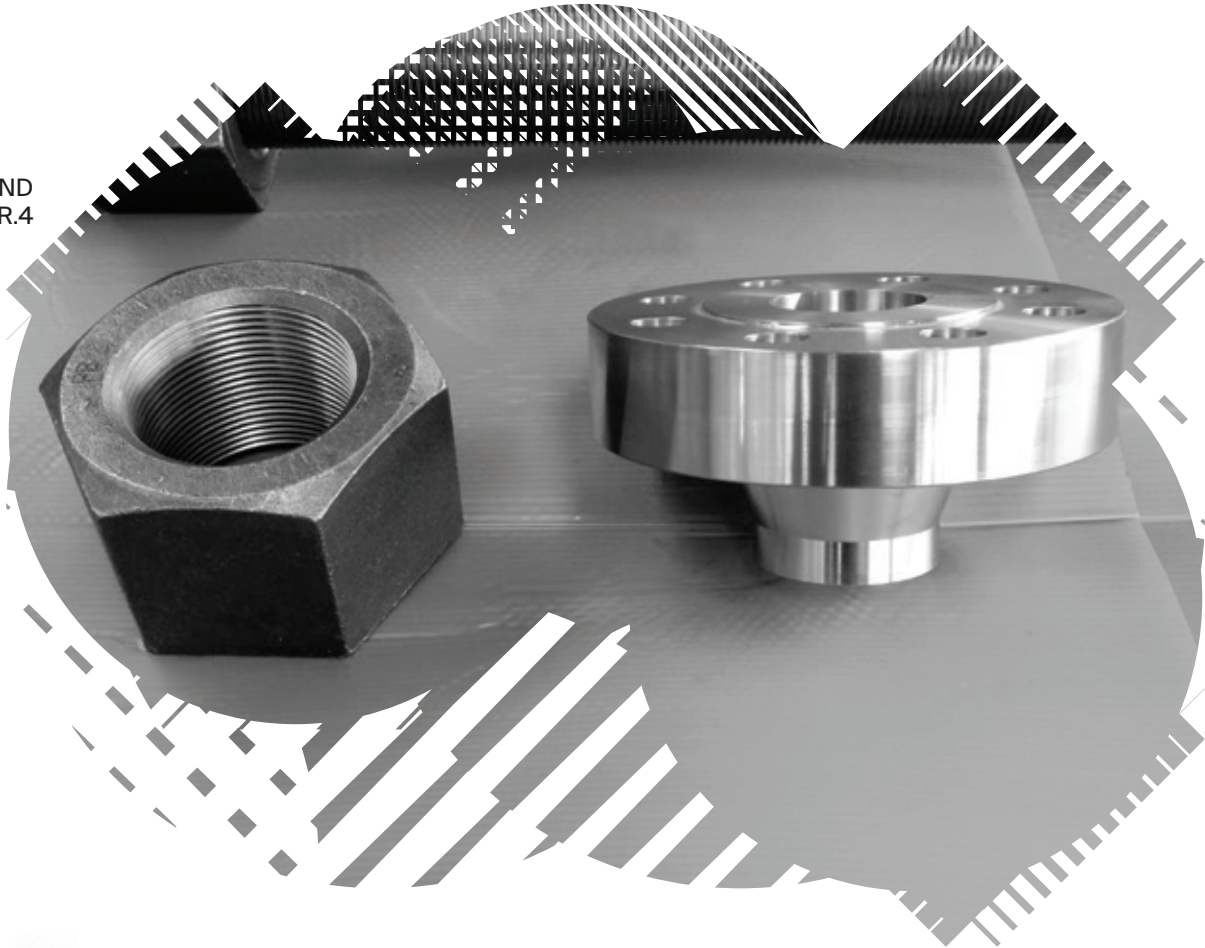
Effind deals in standard and custom Nuts & Bolts (fully threaded stud bolts, nuts, bolts, etc.), as well as on-design details as requested by the clients, mainly for industries in the chemical and petrochemical sector.

32

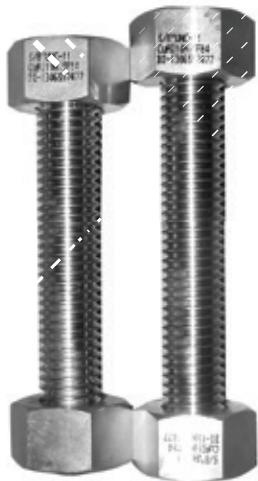
STUD BOLTS &
HEX. NUTS



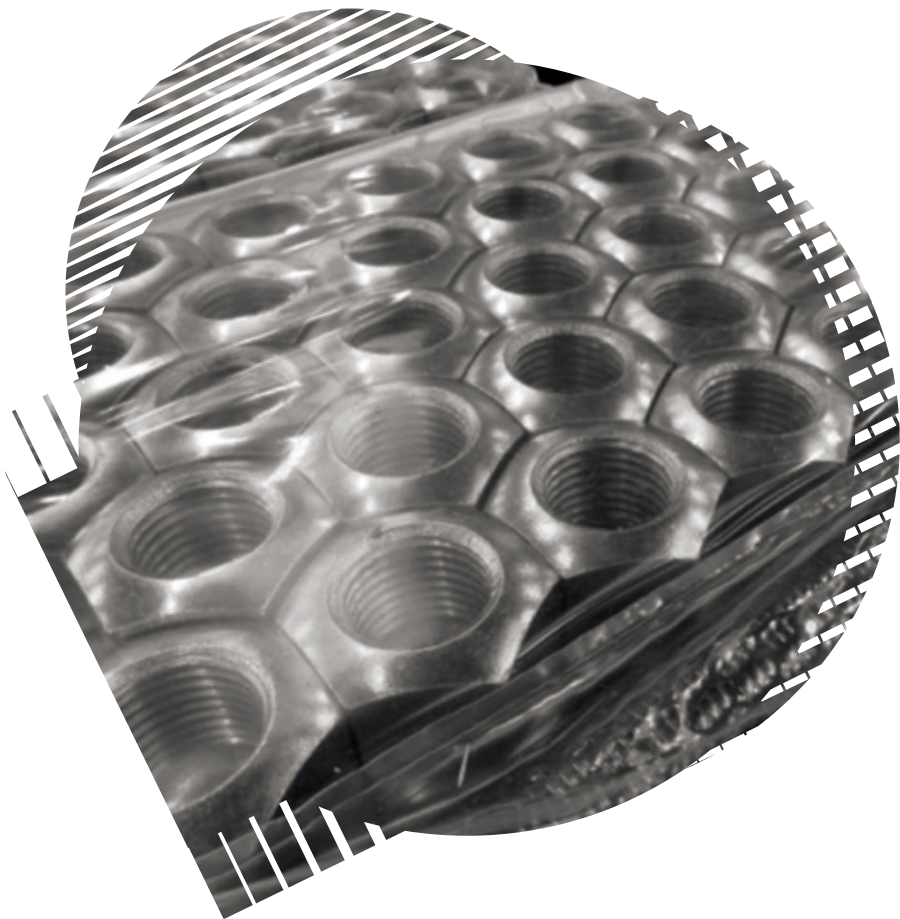
3" 8UN X 950
STUD BOLT AND
NUT IN B16 GR.4



5/8" UNC
STUDBOLTS AND
NUTS IN CU/NI



3" 8UN HEAVY
HEX. NUT IN
A194-GR.4



certification

At the end of the supply process, Effind accompanies each piece with the relevant certification as per standard UNI EN 10204/3.1, which certifies compliance of materials and ensures complete traceability of the product. On request we can also supply UNI EN 10204/3.2 certification by accredited third-party agencies.



34





EFFIND

THE TEAM FOR PIPING SOLUTIONS

Effind S.r.l.

Via G.A.M. Rollet, 12
Fagagna (UD) | Italy
Ph. +39 0432 974338

info@effind.com



www.effind.com